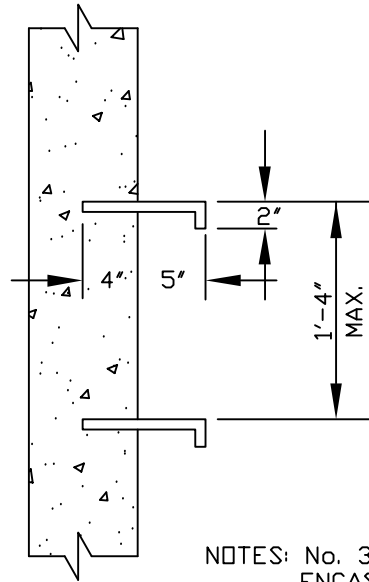
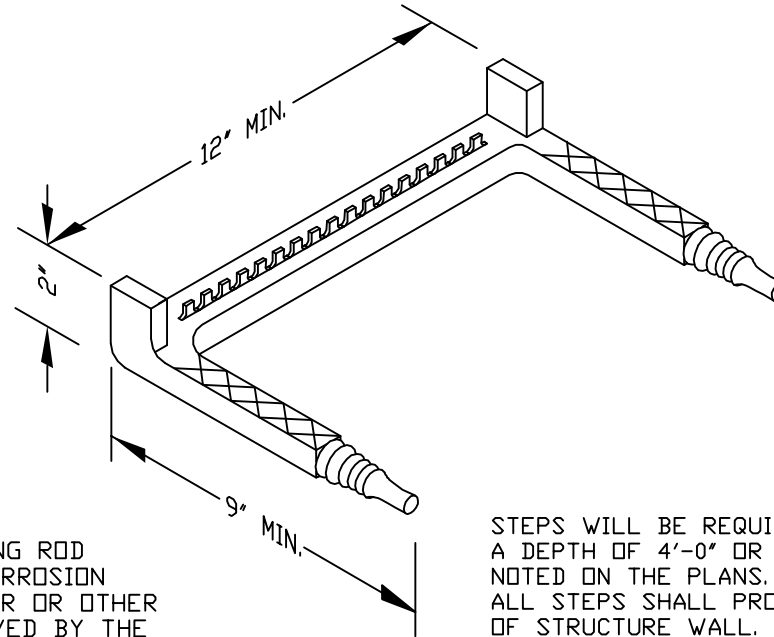


TYPICAL SECTION
(DIMENSIONS MAY VARY WITH
MANUFACTURER'S DESIGN)

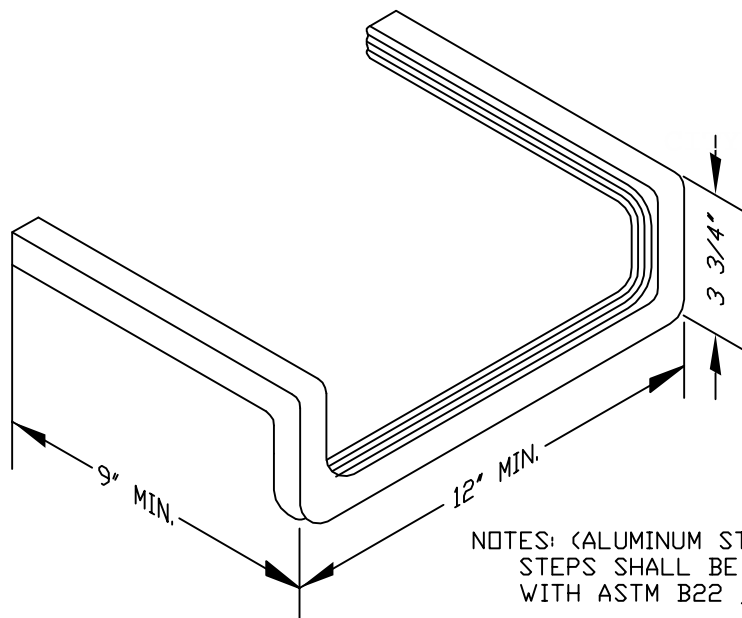


NOTES: No. 3 REINFORCING ROD
ENCASED IN A CORROSION
RESISTANT RUBBER OR OTHER
MATERIAL APPROVED BY THE
ENGINEER.



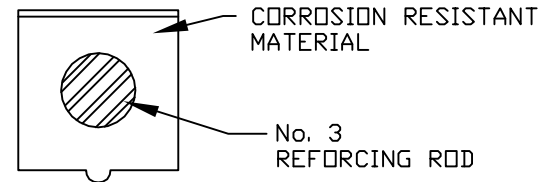
NOTES

STEPS WILL BE REQUIRED IN ALL STRUCTURES WITH
A DEPTH OF 4'-0" OR GREATER UNLESS OTHERWISE
NOTED ON THE PLANS.
ALL STEPS SHALL PROTRUDE 5" FROM INSIDE FACE
OF STRUCTURE WALL.
MAXIMUM STEP SPACING TO BE 1'-4" C-C.
STEPS SHALL WITHSTAND A MINIMUM LOAD OF 300
POUNDS WHEN EXTENDED 5" FROM FACE OF THE
SUPPORT.
STEPS ARE TO BE VERTICALLY ALIGNED AND UNIFORMLY
SPACED FOR THE ENTIRE DEPTH OF ANY STRUCTURE.
IN PRECAST UNITS STEPS MAY BE CAST IN PLACE OR
MORTARED INTO HOLES PROVIDED BY THE FABRICATOR.
STEPS DIFFERING IN DIMENSIONS, CONFIGURATION, OR
MATERIALS FROM THOSE SHOWN MAY ALSO BE USED
PROVIDED THEY MEET THE MINIMUM REQUIREMENTS
SHOWN HEREON AND THE CONTRACTOR HAS FURNISHED
THE ENGINEER WITH DETAILS AND CERTIFIED TEST
REPORTS OF THE PROPOSED SUBSTITUTE AND HAS
RECEIVED WRITTEN APPROVAL FROM THE ENGINEER FOR
THE USE OF SUCH STEPS.



NOTES: (ALUMINUM STEP)
STEPS SHALL BE FABRICATED IN ACCORDANCE
WITH ASTM B22 , ALLOY 6005-T5.

THAT PORTION OF THE STEP ENCASED IN
MASONRY SHALL BE UNIFORMLY COATED WITH A
BITUMINOUS, SOLVENT TYPE, ASBESTOS FILLED
ALUMINUM PIGMENTED COATING CONFORMING
TO FEDERAL SPECIFICATION TC-C-00498A.



TYPICAL SECTION
(DIMENSIONS MAY VARY WITH
MANUFACTURER'S DESIGN)

Chesapeake VIRGINIA		DESIGN AND CONSTRUCTION STANDARDS	
		STEP	
08/01/03	REV. FOR INTERNET 2003	DR. BY:	DATE:
DATE	REVISIONS	CHK. BY:	DATE:
		APP. BY:	DATE:
			ST-1