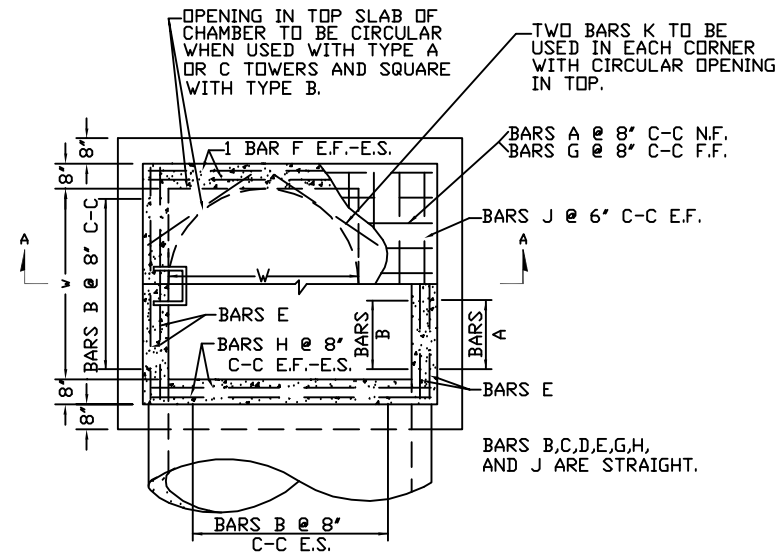


BARS B,C,D,E,G,H,J ARE STRAIGHT.



## DETAIL OF CHAMBER

WHEN SPECIFIED ON PLANS, INVERT IS TO BE SHAPED IN ACCORDANCE WITH STANDARD PLAN IS-1. THE MATERIALS INCIDENTAL TO THE SHAPING ARE NOT TO BE MEASURED OR PAID FOR SEPARATELY, BUT THE COST OF SAME IS TO BE INCLUDED IN THE PRICE BID PER CU. YD. OF JUNCTION BOX CONCRETE.

THIS ITEM MAY BE PRECAST OR CAST IN PLACE.

PRECAST CHAMBERS OF THE BOLT TOGETHER TYPE MAY BE SUBSTITUTED WHEN APPROVED ON AN INDIVIDUAL BASIS.

ALL CONCRETE TO BE CLASS A3 IF CAST IN PLACE, 4000 PSI IF PRECAST.

MAXIMUM DEPTH OF JUNCTION BOX INVERT TO GRADE TO BE 20'.

FOR DETAILS OF METHOD OF TURNING ANGLES AND APPROXIMATE QUANTITIES, SEE SHEET 2 OF 3.

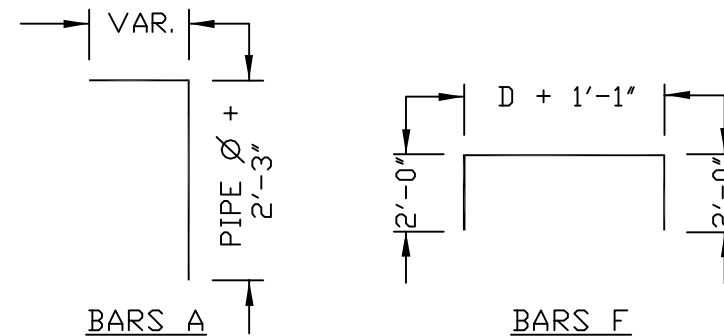
"W" DENOTES BOTH THE INTERNAL CHAMBER WIDTH ALONG THE NARROW AXIS AND THE DIMENSION OF THE OPENING IN THE TOP SLAB OF THE CHAMBER.

ALL REINFORCING STEEL TO BE #6 BARS WITH A MINIMUM 1-1/2" CONCRETE COVER.

ANY REINFORCING BARS IN CONFLICT WITH PIPE SHELLS ARE TO BE CUT A MINIMUM OF 1-1/2" FROM PIPE.

THE LENGTH OF ALL BARS AND THE NUMBER REQUIRED WILL VARY WITH THE SIZE OF CHAMBER. FOR APPROXIMATE POUNDAGE SEE SHEET 2 & 3 OF THIS STANDARD.

CHESAPEAKE STANDARD ST-1 STEPS SHALL BE PROVIDED IN ALL STRUCTURES DEEPER THAN 4'.



Sheet 2 of 4

		DESIGN AND CONSTRUCTION STANDARDS	
		<b>JUNCTION BOX CONCRETE</b> <b>(48" - 72" PIPE)</b>	
08/01/03	REV. FOR INTERNET 2003	DR. BY:	DATE:
DATE	REVISIONS	CHK. BY:	DATE:
		APP. BY:	DATE:
			<b>JB-1</b>

10